

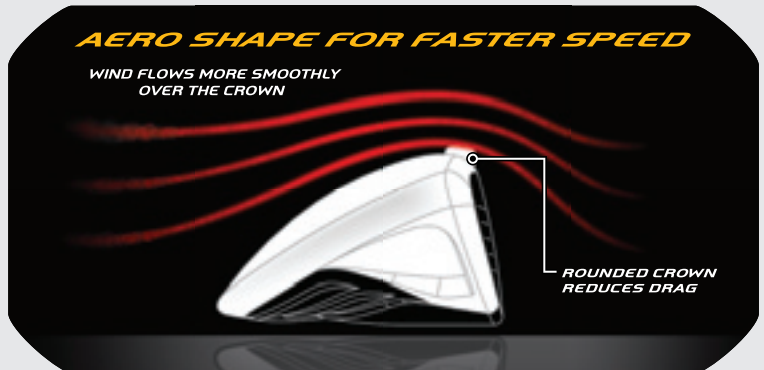
BURNER[®] SUPERFAST 2.0 DRIVER



NO SPEED TOO EXTREME

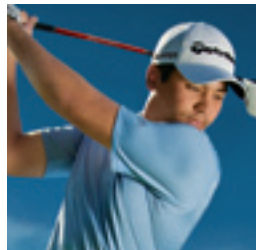
AERO SHAPE FOR FASTER SPEED

WIND FLOWS MORE SMOOTHLY
OVER THE CROWN



BURNER[®] SUPERFAST 2.0

- ▶ Long shaft, lighter weight and new low-drag aerodynamics promote faster swing speed for more distance
- ▶ Lightest TaylorMade driver ever - 279 grams
- ▶ Bigger, deeper clubface works with low CG to promote higher launch/lower spin for increased distance
- ▶ New head shape and Inverted Cone face technology create the largest sweetspot of any TaylorMade driver
- ▶ White non-glare crown and black clubface makes alignment easy

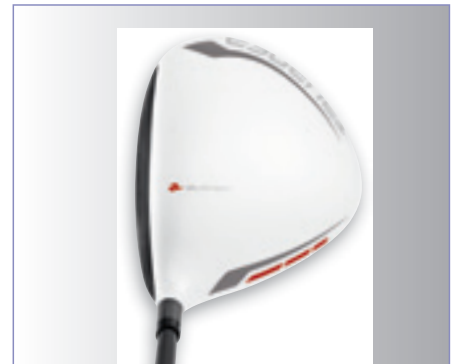


"The Burner SuperFast 2.0 feels great and looks fantastic. No other driver can compete with the speed, performance and the distance. It's such a good driver Ñ it's ridiculous."

JASON DAY
PGA TOUR PROFESSIONAL

GRIP:
B11 Winn Lite - 25g
TV Lite - 44g
B11 Winn Lite - 25g

SHAFT:
Matrix[®] XCON 4.8 - X, S, R, M, L
Matrix[®] HD6 - X, S
Matrix[®] XCON 5 - R



CLUB / LOFT	HAND	LIE	VOLUME	LENGTH	SWING WEIGHT
8.5	R	59°	460cc	45.5"	D4
9.5 9.5° 9.5°	R/L R/L R	61° 59° 61°	460cc 460cc 460cc	46.5" 45.5" 45.5"	D9 D4 D2
10.5 10.5° 10.5°	R/L R/L R	61° 59° 61°	460cc 460cc 460cc	46.5" 45.5" 45.5"	D9 D4 D2
HT / 13.0° 13.0°	R R	61° 61°	460cc 460cc	46.5" 45.5"	D9 D2

CUSTOM OPTIONS AVAILABLE [TP SPECS](#) | [WOMEN'S SPECS](#)